

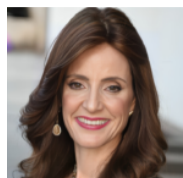
# DeepLearn 2025

## 12th INTERNATIONAL SCHOOL ON DEEP LEARNING

(with a special focus on Large Language Models, Foundation Models and Generative AI)

Porto - Maia, Portugal · July 21-25, 2025

### Keynotes



**Yonina Eldar**  
Weizmann Institute of Science  
Model Based AI and Applications



**Manuela Veloso**  
JPMorganChase  
AI, Humans, and Robots for Task Solving

### Courses (to be completed)



**Pierre Baldi**  
University of California Irvine  
[intermediate/advanced] From Deep Learning and Transformers to AI Risks and Safety



**Sean Benson**  
Amsterdam University Medical Center  
[intermediate] Digital Twins and Generative AI for Personalised Medicine



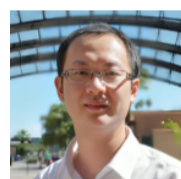
**Mark Derdzinski**  
Dexcom  
[introductory] From Prototype to Production: Evaluation Strategies for Agentic Applications



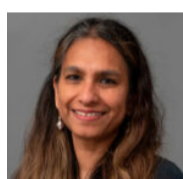
**Samira Ebrahimi Kahou**  
University of Calgary  
[intermediate/advanced] Explainability in Machine Learning



**Elena Giusarma**  
Michigan Technological University  
[introductory/intermediate] Machine Learning at the Frontier of Astrophysics: Simulating the Universe



**Xia "Ben" Hu**  
Rice University  
[introductory/advanced] Efficient LLM Serving: Algorithms, Systems and Applications



**Jayashree Kalpathy-Cramer**  
University of Colorado  
[introductory/intermediate] Multimodal AI for Healthcare



**Yingbin Liang**  
Ohio State University  
[intermediate/advanced] Theory on Training Dynamics of Transformers



**Chen Change Loy**  
Nanyang Technological University  
[intermediate/advanced] Harnessing Prior for Content Enhancement and Creation



**Preslav Nakov**  
Mohamed bin Zayed University of Artificial Intelligence  
tba



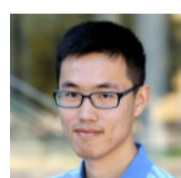
**Evan Shelhamer**  
DeepMind  
[intermediate] Test-Time Adaptation for Updating Models on New and Different Data



**Atlas Wang**  
University of Texas Austin  
[intermediate] Low Rank Strikes Back in the Era of Large Language Models



**Xiang Wang**  
University of Science and Technology of China  
[advanced] Large Language Models for User Behavior Modeling: Cross-Modal Interpretation, Preference Optimization, and ...



**Rex Ying**  
Yale University  
[intermediate/advanced] Multimodal Foundation Models for Graph-Structured Data: Framework and Scientific Applications

More info: <https://deeplearn.irdta.eu/2025>



Universidade da Maia



Universidade do Porto



Intelligent Systems Associate Laboratory



Artificial Intelligence and Computer Science Laboratory (LIACC)



Universitat Rovira i Virgili



Institute for Research Development, Training and Advice